



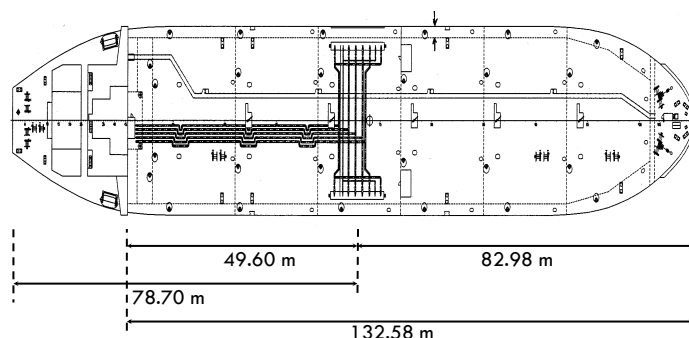
NAME : Northern Spirit
TYPE : Oil/Chemical Tanker
TYPE OF HULL : Double Hull
OWNER : McKeil International 1 Inc. (IMO: 6143718)
FLAG : Marshall Islands
PORT OF REGISTRY : Majuro
BUIDER'S YARD : Yang fan Shipyard - China
BUILT : February 2011
TECHNICAL OPERATOR : ABC Maritime AG
LAST DRY DOCK : December 2015
CALL SIGN MMSI : V7A2858

HULL NO. : 2005
IMO NO. : 9580962
MMSI : 538008873
CLASS SOCIETY : Bureau Veritas
CLASS ID NUMBER : 22337G
CLASS NOTATION : I ✕HULL ✕MACH, Oil & Chemical tanker
 ESP; Unrestricted navigation; ✕ AUT-UMS (SS), ✕ SYS-NEQ-1
 (SS), MON-SHAFT, ICE CLASS IA, VCS, IG (SS)
P&I CLUB : North of England P & I Association Ltd
GMDSS AREA : A1-A2-A3

DIMENSIONS & TONNAGE

| | |
|------------------------------|----------|
| LOA | 161.68 |
| LBP | 150.80 |
| GRT | 13239 |
| NRT | 6093 |
| SUEZ TONNAGE | 14141.58 |
| MOULDED BREADTH | 23 |
| MOULDED DEPTH | 12.4 |
| KEEL TO MASTHEAD | 41.855 |
| LIGHT SHIP PARALLEL BODY | 71.2 |
| NORMAL BALLAST PARALLEL BODY | 83.2 |
| PARALLEL BODY AT SDWT | 92 |

| CONDITION | SUMMER | WINTER | TROPICAL | SBT |
|---------------------------------|--------|--------|----------|--------|
| DWT | 19118 | 18517 | 19721 | 9145 |
| DISPLACEMENT | 25695 | 25094 | 26298 | 15717 |
| DRAFT | 9.000 | 8.812 | 9.188 | 6.250 |
| FREE BOARD | 3.412 | 3.600 | 3.224 | 6.650 |
| FWA (mm) | 201 | 201 | 201 | 201 |
| AIR DRAFT | 32.850 | 33.043 | 32.667 | 38.440 |
| TPC | 32.01 | 31.90 | 32.15 | 32.30 |
| HEIGHT MANIFOLD ABOVE WATERLINE | 7.110 | 7.288 | 6.912 | 10.388 |

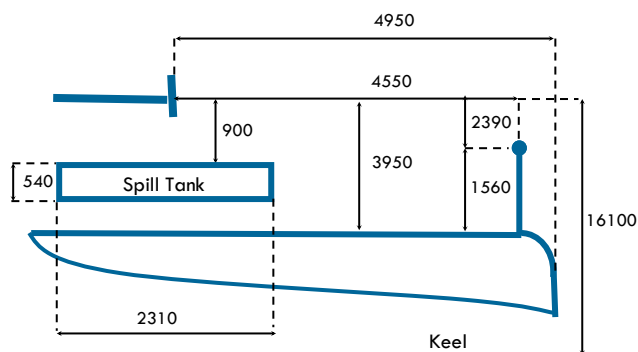
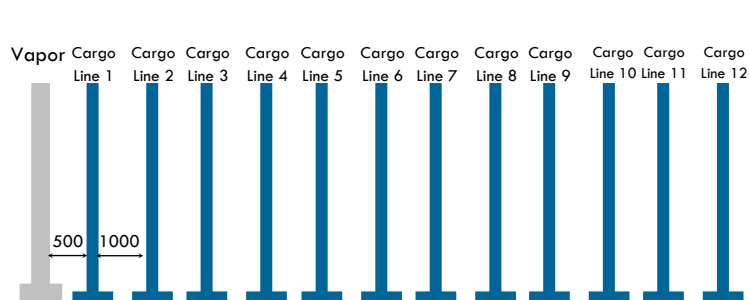


CARGO SYSTEM PARTICULARS

| | |
|-----------------------------------|------------------------|
| MAX RATE LOADING | 2100 m ³ /h |
| MAX RATE DISCHARGING | 2100 m ³ /h |
| MAX ALLOW PRESSURE CARGO LINE | 10 bar |
| P/V - VALVES MAX VENTING CAPACITY | 900 m ³ /h |
| P/V - VALVE OPENING PRESSURE | 200 mbar |
| P/V - VALVE VACUUM SETTING | -35 mbar |

| | |
|------------------------|---|
| NUMBER OF SEGREGATIONS | 13 |
| CARGO MANIFOLDS | 13 x 250 mm + 1 x 100 mm |
| CARGO TANK'S COATING | Marine LINE |
| CARGO HEATING | Framo deck heat exchanger |
| CARGO PUMPS | 12x300 + 2x150 + 1x75 m ³ /h |
| STRIPPING | N/A |

MANIFOLDS ARRANGEMENT - in millimeters -



TANKS' CAPACITIES

CARGO - 98%

| Tank | 1P | 1S | 2P | 2S | 3P | 3S | 4P | 4S | 5P | 5S | 6P | 6S |
|--------------------------|----------------|--------|--------|--------|--------|--------|--------|--------|--------|--------|--------|--------|
| Volume in m ³ | 1359.6 | 1357.2 | 1949.3 | 1947.6 | 1986.9 | 1990.5 | 1989.8 | 1984.6 | 1985.5 | 1986.3 | 1417.6 | 1424.3 |
| Total | 21379.1 | | | | | | | | | | | |

BALLAST-100%

14 x
TANKS
9255.8

FUEL OIL TANKS CAPACITY VOLUME 98%

| | |
|-------------------|--------------|
| HFO STORAGE TK 1P | 158.5 |
| HFO STORAGE TK 1S | 181.1 |
| HFO STORAGE TK 2S | 103.7 |
| HFO STORAGE TK 3S | 91.1 |
| HFO SERVICE TK 1 | 46.6 |
| HFO SETTling TK 1 | 42.2 |
| HFO SERVICE TK 2 | 32.5 |
| HFO SETTling TK 2 | 30.7 |
| TOTAL | 686.4 |

DIESEL OIL TANKS CAPACITY VOLUME 98%

| | |
|----------------|-------------|
| GO STORAGE TK | 37.4 |
| GO SERVICE TK | 18.9 |
| GO SETTling TK | 18.9 |
| TOTAL | 75.2 |

FRESH WATER TANKS CAPACITY VOLUME 100%

| | |
|-------------------|--------------|
| DOMESTIC FW TK | 145.6 |
| TECHNICAL FW TK P | 52.1 |
| TECHNICAL FW TK S | 176.9 |
| TECH. FW TK AFT | 99.5 |
| TOTAL | 473.1 |

LUB OIL TANKS CAPACITY VOLUME 98%

| | |
|------------------|-------------|
| ME LO STORAGE TK | 12.3 |
| ME LO RENOV TK | 17.1 |
| DG LO TK | 12.2 |
| CPP LO TK | 3.2 |
| GEAR BOX LO TK | 33 |
| ME LO SUMP TK | 12.1 |
| TOTAL | 60.2 |

ADDITIONAL INFORMATION

| | |
|-------------------------------|---|
| MAIN ENGINE + SHAFT GENERATOR | 1 x Mak 7M43C - 6300 kW @ 500 rpm + 1 x AEM 1500 kW @ 1800 rpm |
| AUXILIARY ENGINES | 3 x 5H21/32 - 960 kW @ 900 rpm |
| EMERGENCY DIESEL GENERATOR | 1 x Nordhavn - Meccalte ECO 38-ISN/4 - 150 kW @ 1800 rpm |
| PROPELLER | 1 x CPP - 4 blades - Diameter 5400 mm |
| BOW THRUSTER | 1 x Schottel - STT002CP - 800 kW @ 1770 rpm |
| MAIN AIR COMPRESSOR | 1 x Sauer & Sohn WP45L - 62 m ³ /h - 30 bar @ 1770 rpm |
| BILGE WATER SEPARATOR | RWO - SKITS DEB-SPS 1.8 - Capacity 1.8 m ³ /h |
| AUXILIARY BOILER | 1 x Saacke Qingdao - FMB-VM-14/7 - Heating capacity 7600 kW |
| INCINERATOR PLANT | TeamTec OG 120C - 22 l/h |
| SEWAGE TREATMENT UNIT | Hamworthy St-2A - 3.2 m ³ /day |
| INERT GAS SYSTEM | Nitrogen Generator - 2100 m ³ /h @ 95% N ₂ & 250 m ³ /h @ 99.9% N ₂ |
| TOP UP GENERATOR | N/A |



Rue Perdtemps 1
CH-1260 Nyon Switzerland

Last update: 12/02/20

Tel: +41(0)22 365 71 00
Fax: +41(0)22 365 71 11

www.abcmaritime.ch
info@abcmaritime.ch

N.B.: all particulars are given in good faith, but are not guaranteed.

