



**NAME :** ADFINES SUN

**TYPE :** Oil/Chemical Tanker

**TYPE OF HULL :** Double Hull

**OWNER :** Icetank Twenty-Four Shipping Corp.  
(IMO: 5632364)

**FLAG :** Malta

**PORT OF REGISTRY :** Valletta

**BUIDER'S YARD :** Yang fan Shipyard - China

**BUILT :** November 2011

**TECHNICAL OPERATOR :** ABC Maritime

**LAST DRY DOCK:** 15.11.2016

**CALL SIGN :** 9HA2925

**HULL NO. :** 2008

**IMO NO. :** 9580998

**MMSI :** 256764000

**CLASS SOCIETY :** Bureau Veritas

**CLASS ID NUMBER :** 21960W

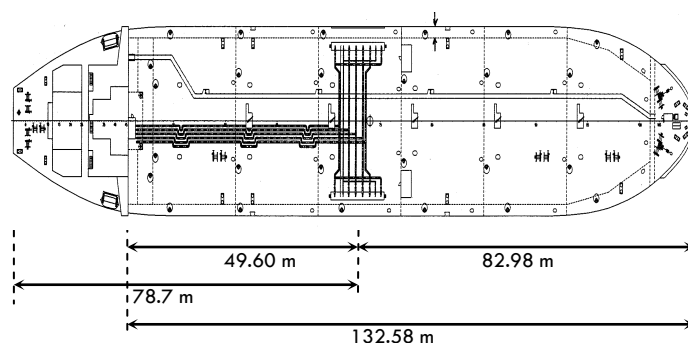
**CLASS NOTATION :** I ✕HULL ✕MACH, Oil & Chemical tanker  
ESP; Unrestricted navigation; ✕ AUT-UMS (SS), ✕ SYS-NEQ-1  
(SS), MON-SHAFT, ICE CLASS IA, VCS, IG (SS)

**P&I CLUB :** North of England P & I Association Ltd

**GMDSS AREA :** A1-A2-A3

## DIMENSIONS, TONNAGE & CONSUMPTIONS

		CONDITION	SUMMER	WINTER	TROPICAL	SBT
LOA	161.68	DWT	19132	18532	19768	9224.8
LBP	150.80	DISPLACEMENT	25695	25095	26331	15787.8
GRT	13239	DRAFT	9.000	8.812	9.188	5.775
NRT	6093	FREE BOARD	3.412	3.600	3.224	6.637
SUEZ TONNAGE	14141.58	FWA (mm)	201	201	201	201
MOULDED BREADTH	23	AIR DRAFT	32.855	33.043	32.667	36.080
MOULDED DEPTH	12.4	TPC	32.01	31.86	32.17	29.93
KEEL TO MASTHEAD	41.855	HEIGHT MANIFOLD	7.26	7.45	7.07	10.49
LIGHT SHIP PARALLEL BODY	71.2	ABOVE WATERLINE				
NORMAL BALLAST PARALLEL BODY	83.2					
PARALLEL BODY AT SDWT	92					

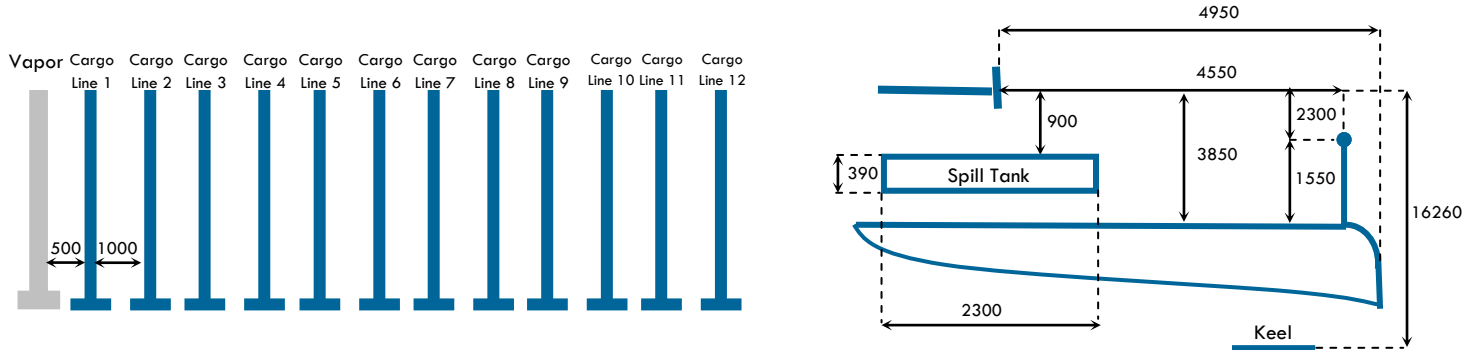


## CARGO SYSTEM PARTICULARS

MAX RATE LOADING	2100 m <sup>3</sup> /h
MAX RATE DISCHARGING	2100 m <sup>3</sup> /h
MAX ALLOW PRESSURE CARGO LINE	10 bar
P/V - VALVES MAX VENTING CAPACITY	900 m <sup>3</sup> /h
P/V - VALVE OPENING PRESSURE	200 mbar
P/V - VALVE VACUUM SETTING	-35 mbar

NUMBER OF SEGREGATIONS	13
CARGO MANIFOLDS	13 x 250 mm + 1 x 100 mm
CARGO TANK'S COATING	Marine LINE
CARGO HEATING	Framo deck heat exchanger
CARGO PUMPS	12x300 + 2x150 + 1x75 m <sup>3</sup> /h
STRIPPING	N/A

## MANIFOLDS ARRANGEMENT - in millimeters -



## TANKS' CAPACITIES

### CARGO - 98%

Tank	1P	1S	2P	2S	3P	3S	4P	4S	5P	5S	6P	6S
Volume in m <sup>3</sup>	1356.5	1355.9	1951.2	1950.2	1987.6	1986.5	1987.0	1984.3	1988.4	1993.2	1422.9	1426.6
<b>Total</b>	<b>21390.3</b>											

### BALLAST-100%

14 x TANKS
<b>9372.9</b>

### FUEL OIL TANKS CAPACITY VOLUME 98%

HFO STORAGE TK 1P	158.5
HFO STORAGE TK 1S	181.1
HFO STORAGE TK 2S	103.7
HFO STORAGE TK 3S	91.1
HFO SERVICE TK 1	42.2
HFO SETTling TK 1	46.6
HFO SERVICE TK 2	32.5
HFO SETTling TK 2	30.8
<b>TOTAL</b>	<b>686.5</b>

### DIESEL OIL TANKS CAPACITY VOLUME 98%

GO STORAGE TK	37.4
GO SERVICE TK	18.9
GO SETTling TK	18.9
<b>TOTAL</b>	<b>75.2</b>

### FRESH WATER TANKS CAPACITY VOLUME 100%

DOMESTIC FW TK	145.6
TECHNICAL FW TK P	52.1
TECHNICAL FW TK S	175.9
TECH. FW TK AFT	99.5
<b>TOTAL</b>	<b>473.1</b>

### LUB OIL TANKS CAPACITY VOLUME 98%

ME LO STORAGE TK	12.3
ME LO RENOV TK	17.1
DG LO TK	9.0
CPP LO TK	3.6
GEAR BOX LO TK	3.6
ME LO SUMP TK	12.1
<b>TOTAL</b>	<b>57.7</b>

## ADDITIONAL INFORMATION

MAIN ENGINE + SHAFT GENERATOR	Mak 7M43C - 6300 kW @ 500 rpm + 1 x AEM SE500S4 - 1480 kW @ 1800 rpm
AUXILIARY ENGINES	3 x 5H21/32 - 960 kW @ 900 rpm
EMERGENCY DIESEL GENERATOR	1 x Nordhavn - Meccalte ECO 38-ISN/4 - 150 kW @ 1800 rpm
PROPELLER	1 x CPP - 4 blades - Diameter 5400 mm
BOW THRUSTER	1 x Schottel - STT002CP - 800 kW @ 1770 rpm
MAIN AIR COMPRESSOR	1 x Sauer & Sohn WP45L - 62 m <sup>3</sup> /h - 30 bar @ 1770 rpm
BILGE WATER SEPARATOR	RWO - SKITS DEB-SPS 1.8 - Capacity 1.8 m <sup>3</sup> /h
AUXILIARY BOILER	1 x Saacke Qingdao - FMB-VM-14/7 - Heating capacity 7600 kW
INCINERATOR PLANT	TeamTec OG 120C - 22 l/h
SEWAGE TREATMENT UNIT	Hamworthy ST-2A - 3.2 m <sup>3</sup> /day
INERT GAS SYSTEM	Nitrogen Generator - 2100 m <sup>3</sup> /h @ 95% N <sub>2</sub> & 250 m <sup>3</sup> /h @ 99.9% N <sub>2</sub>
TOP UP GENERATOR	N/A



Rue Perdtemps 1  
CH-1260 Nyon Switzerland

Tel: +41(0)22 365 71 00  
Fax: +41(0)22 365 71 11

www.abcmaritime.ch  
info@abcmaritime.ch

Last update: 22/09/17

N.B.: all particulars are given in good faith, but are not guaranteed.

